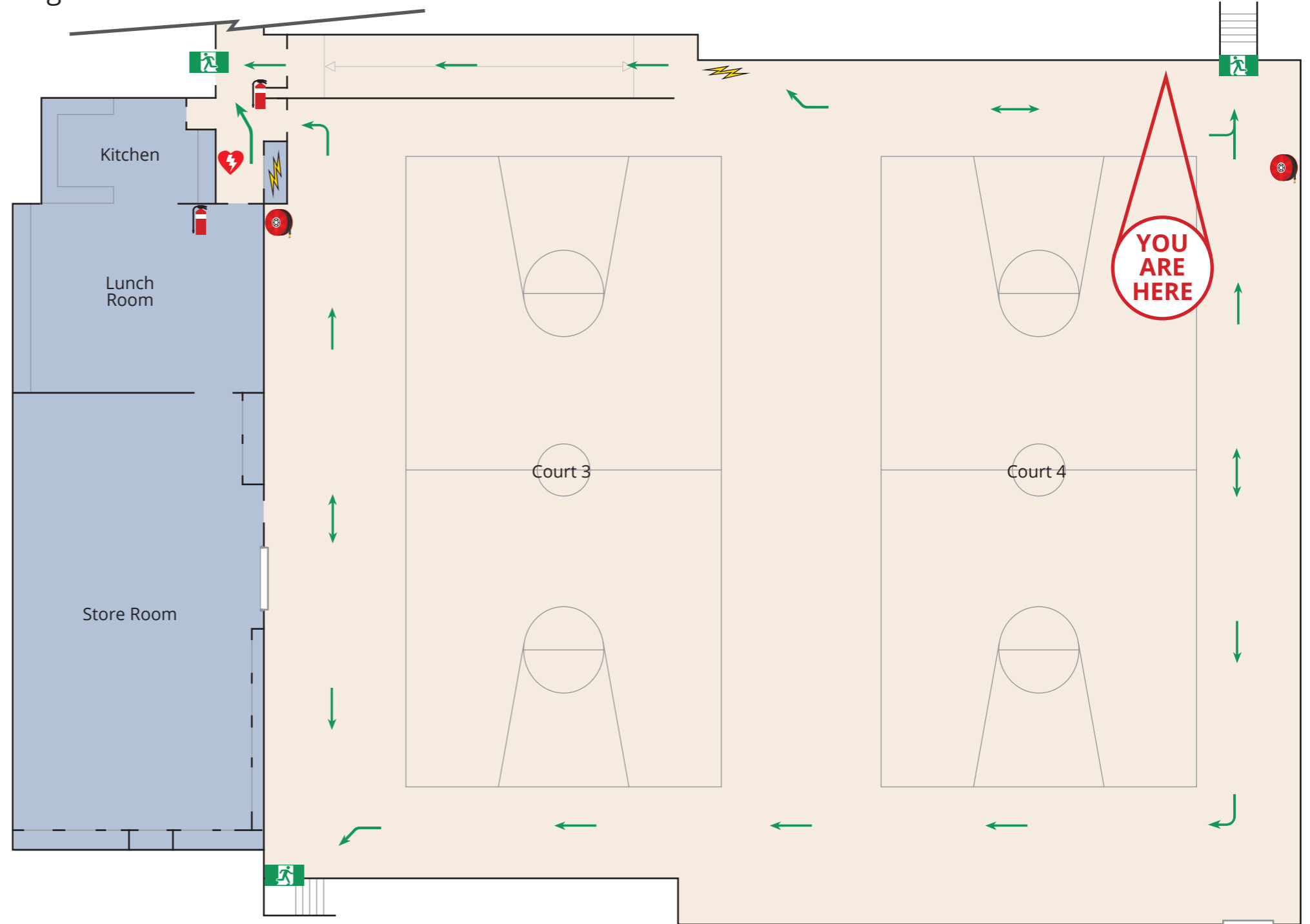
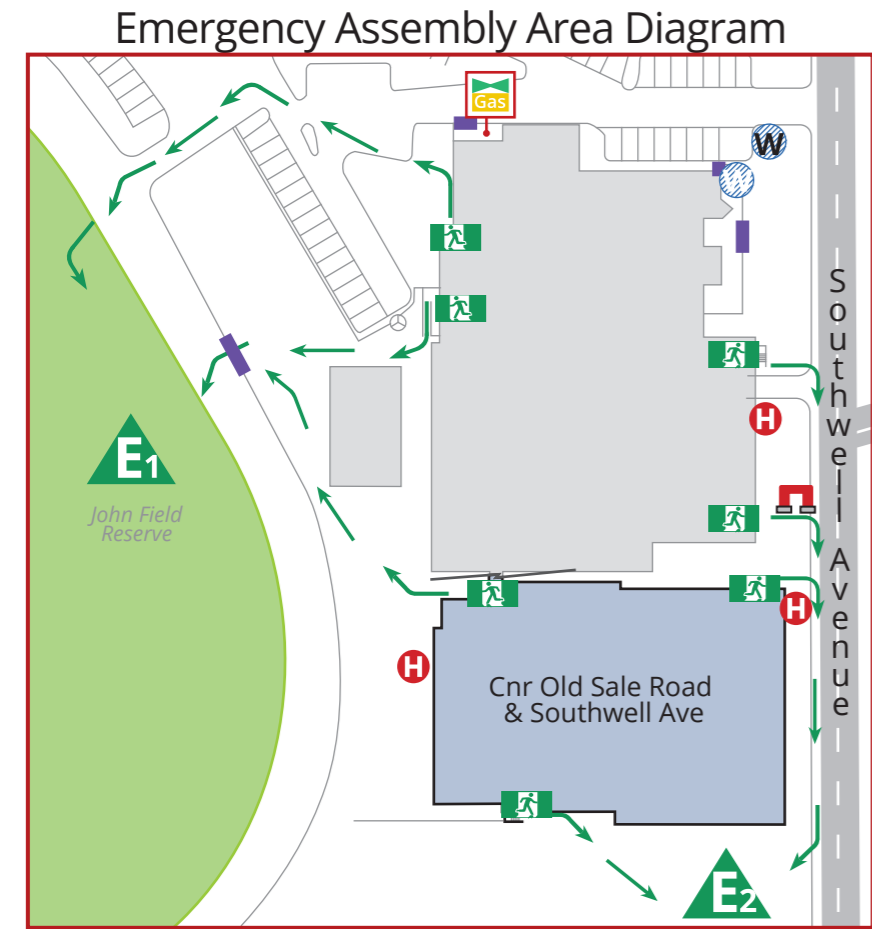


Latrobe Leisure Moe Newborough

Cnr Old Sale Road & Southwell Avenue, Newborough 3825

Evacuation Diagram Ground Floor East



Standard Fire Orders

1 If safe, assist anyone in immediate danger



4 If safe, extinguish fire
DO NOT PLACE YOURSELF IN DANGER!



2 Close the door to isolate fire and smoke



5 If required, evacuate to Assembly Area



3 Call the Fire Brigade on 000
Notify Staff



6 Remain at Assembly Area as directed
Account for all occupants



Legend

	Hose Reel		Hydrant Booster
	Dry Powder Ext.		Static Water Supply
	Roller Door		Water Main
	AED		Gate
	Exit		Gas Isolation Valve
	Switchboard		Preferred Egress Path
	Hydrant		Evac. Assembly Area



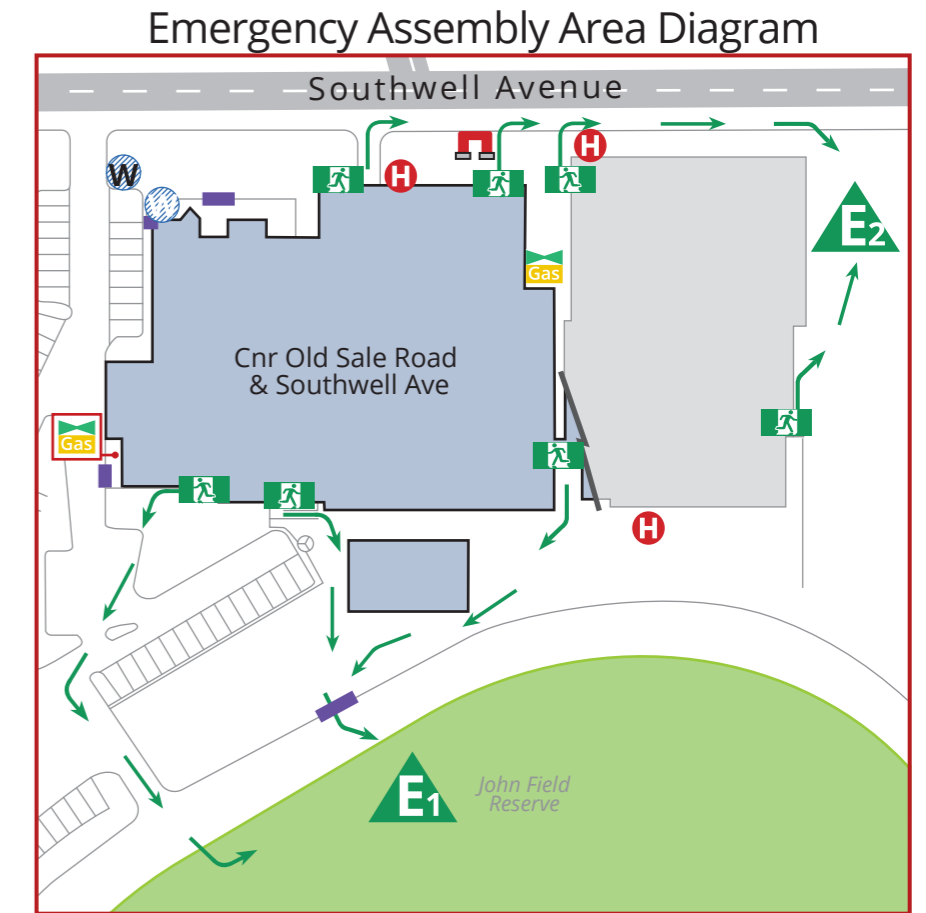
Issue Date: June 2022
Valid to: June 2027

Latrobe Leisure Moe Newborough

Cnr Old Sale Road & Southwell Avenue, Newborough 3825

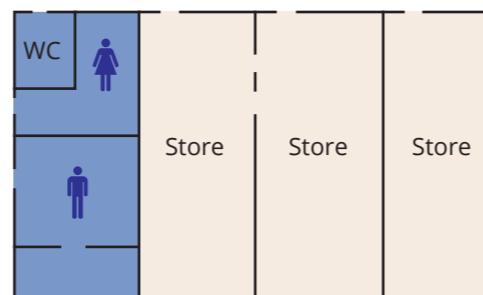
Evacuation Diagram

Ground Floor West



Legend

	Hose Reel		First Aid
	Dry Powder Ext.		Electrical Isolation
	Fire Blanket		Switchboard
	AED		Hydrant
	Eye Wash		Hydrant Booster
	Safety Shower		Static Water Supply
	Corrosive		Water Main
	Exit		Gate
	Roller Door		Gas Isolation Valve
	Spill Kit		Preferred Egress Path
	Warden Equipment		Evac. Assembly Area



Issue Date: June 2022 - Valid to: June 2027

Standard Fire Orders

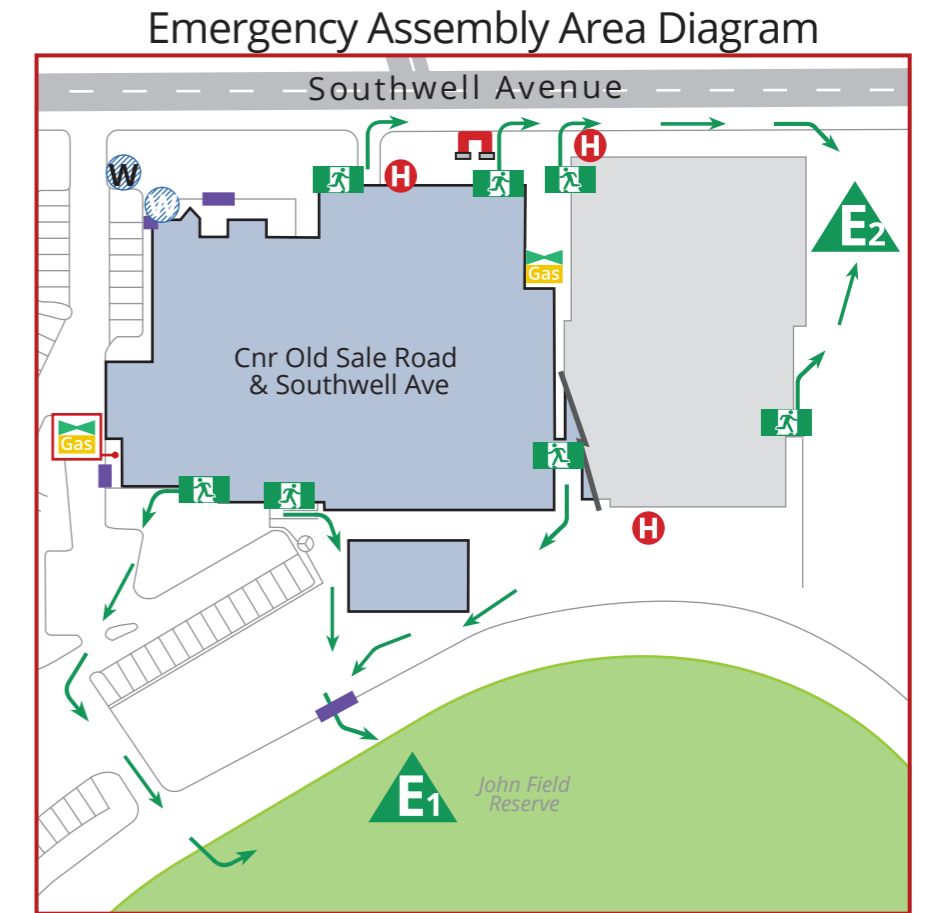
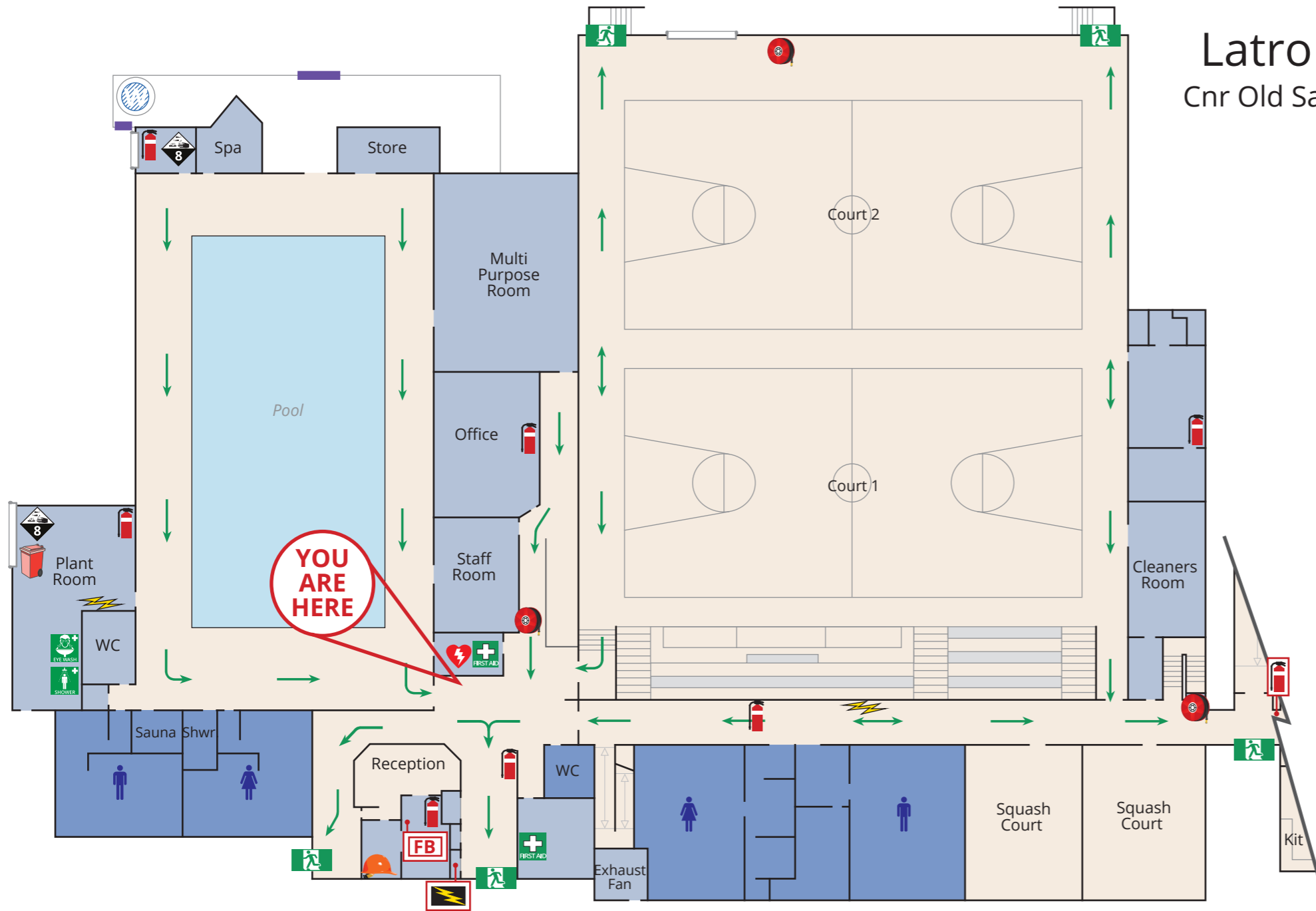
- 1** If safe, assist anyone in immediate danger
- 2** Close the door to isolate fire and smoke
- 3** Call the Fire Brigade on 000
- 4** If safe, extinguish fire DO NOT PLACE YOURSELF IN DANGER!
- 5** If required, evacuate to Assembly Area
- 6** Remain at Assembly Area as directed Account for all occupants

Latrobe Leisure Moe Newborough

Cnr Old Sale Road & Southwell Avenue, Newborough 3825

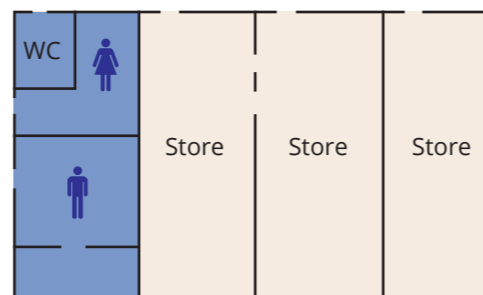
Evacuation Diagram

Ground Floor West



Legend

	Hose Reel		First Aid
	Dry Powder Ext.		Electrical Isolation
	Fire Blanket		Switchboard
	AED		Hydrant
	Eye Wash		Hydrant Booster
	Safety Shower		Static Water Supply
	Corrosive		Water Main
	Exit		Gate
	Roller Door		Gas Isolation Valve
	Spill Kit		Preferred Egress Path
	Warden Equipment		Evac. Assembly Area



Issue Date: June 2022 - Valid to: June 2027

Standard Fire Orders

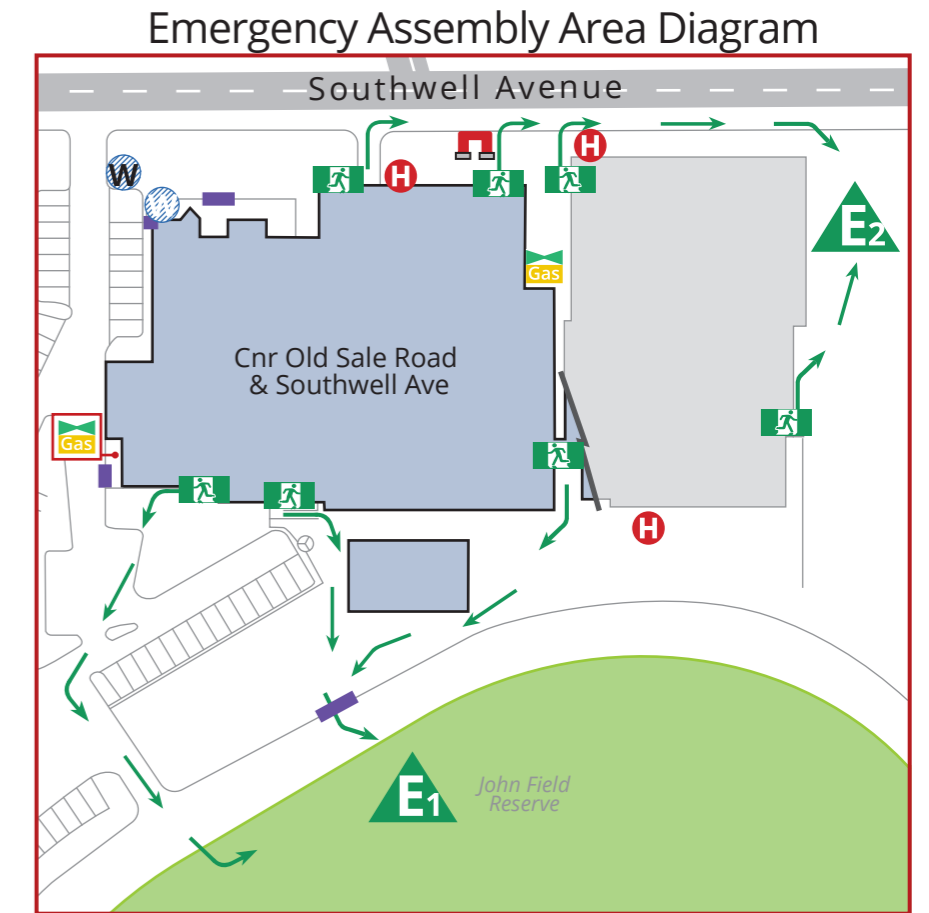
- 1** If safe, assist anyone in immediate danger
- 2** Close the door to isolate fire and smoke
- 3** Call the Fire Brigade on 000 Notify Staff
- 4** If safe, extinguish fire DO NOT PLACE YOURSELF IN DANGER!
- 5** If required, evacuate to Assembly Area
- 6** Remain at Assembly Area as directed Account for all occupants

Latrobe Leisure Moe Newborough

Cnr Old Sale Road & Southwell Avenue, Newborough 3825

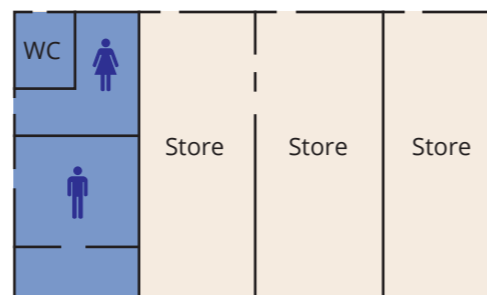
Evacuation Diagram

Ground Floor West



Legend

	Hose Reel		First Aid
	Dry Powder Ext.		Electrical Isolation
	Fire Blanket		Switchboard
	AED		Hydrant
	Eye Wash		Hydrant Booster
	Safety Shower		Static Water Supply
	Corrosive		Water Main
	Exit		Gate
	Roller Door		Gas Isolation Valve
	Spill Kit		Preferred Egress Path
	Warden Equipment		Evac. Assembly Area



Issue Date: June 2022 - Valid to: June 2027

Standard Fire Orders

- 1** If safe, assist anyone in immediate danger
- 2** Close the door to isolate fire and smoke
- 3** Call the Fire Brigade on 000
- 4** If safe, extinguish fire DO NOT PLACE YOURSELF IN DANGER!
- 5** If required, evacuate to Assembly Area
- 6** Remain at Assembly Area as directed Account for all occupants

Latrobe Leisure Moe Newborough

Cnr Old Sale Road & Southwell Avenue, Newborough 3825

Evacuation Diagram Ground Floor West

Legend

	Hose Reel		First Aid
	Dry Powder Ext.		Electrical Isolation
	Fire Blanket		Switchboard
	AED		Hydrant
	Eye Wash		Hydrant Booster
	Safety Shower		Static Water Supply
	Corrosive		Water Main
	Exit		Gate
	Roller Door		Gas Isolation Valve
	Spill Kit		Preferred Egress Path
	Warden Equipment		Evac. Assembly Area

Emergency Assembly Area Diagram



YOU ARE HERE



Standard Fire Orders

- 1** If safe, assist anyone in immediate danger
- 2** Close the door to isolate fire and smoke
- 3** Call the Fire Brigade on 000 Notify Staff
- 4** If safe, extinguish fire DO NOT PLACE YOURSELF IN DANGER!
- 5** If required, evacuate to Assembly Area
- 6** Remain at Assembly Area as directed Account for all occupants

Issue Date: June 2022 - Valid to: June 2027



Latrobe Leisure Moe Newborough

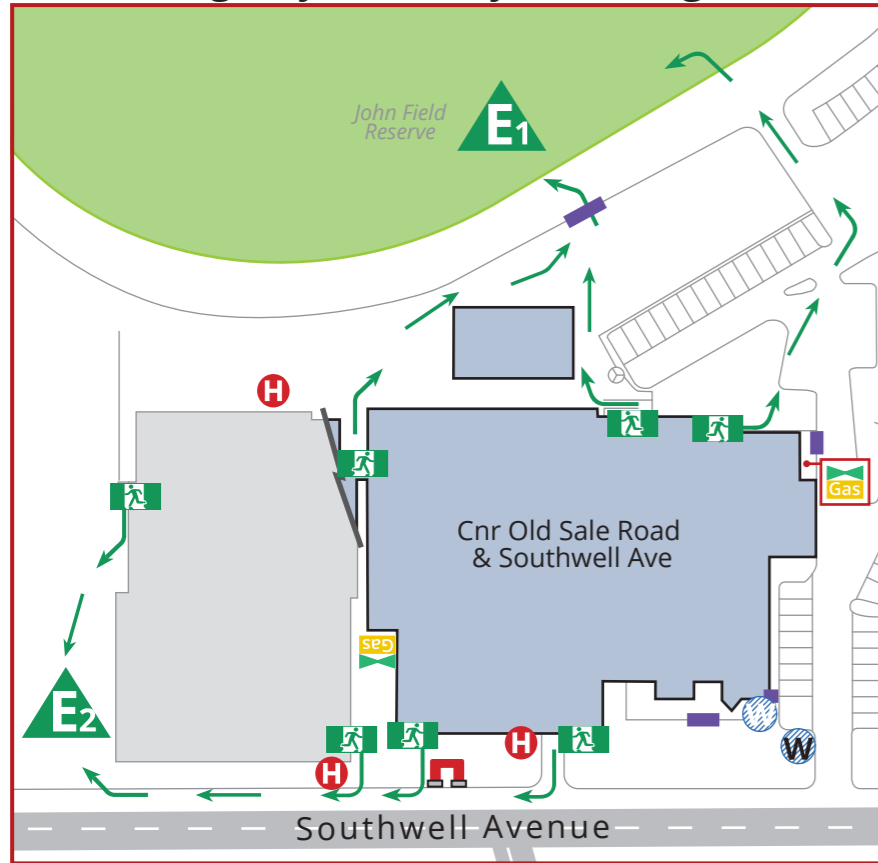
Cnr Old Sale Road & Southwell Avenue, Newborough 3825

Evacuation Diagram Ground Floor West

Legend

	Hose Reel		First Aid
	Dry Powder Ext.		Electrical Isolation
	Fire Blanket		Switchboard
	AED		Hydrant
	Eye Wash		Hydrant Booster
	Safety Shower		Static Water Supply
	Corrosive		Water Main
	Exit		Gate
	Roller Door		Gas Isolation Valve
	Spill Kit		Preferred Egress Path
	Warden Equipment		Evac. Assembly Area

Emergency Assembly Area Diagram



Standard Fire Orders

- 1** If safe, assist anyone in immediate danger
- 2** Close the door to isolate fire and smoke
- 3** Call the Fire Brigade on 000 Notify Staff
- 4** If safe, extinguish fire DO NOT PLACE YOURSELF IN DANGER!
- 5** If required, evacuate to Assembly Area
- 6** Remain at Assembly Area as directed Account for all occupants

Issue Date: June 2022 - Valid to: June 2027

Latrobe Leisure Moe Newborough

Cnr Old Sale Road & Southwell Avenue, Newborough 3825

Evacuation Diagram

Ground Floor West

Standard Fire Orders























- 1** If safe, assist anyone in immediate danger 
- 2** Close the door to isolate fire and smoke 
- 3** Call the Fire Brigade on 000 Notify Staff 
- 4** If safe, extinguish fire DO NOT PLACE YOURSELF IN DANGER! 
- 5** If required, evacuate to Assembly Area 
- 6** Remain at Assembly Area as directed Account for all occupants 



Emergency Assembly Area Diagram



Legend

-  Hose Reel
-  Dry Powder Ext.
-  Fire Blanket
-  AED
-  Eye Wash
-  Safety Shower
-  Corrosive
-  Exit
-  Roller Door
-  Spill Kit
-  Warden Equipment
-  First Aid
-  Electrical Isolation
-  Switchboard
-  Hydrant
-  Hydrant Booster
-  Static Water Supply
-  Water Main
-  Gate
-  Gas Isolation Valve
-  Preferred Egress Path
-  Evac. Assembly Area

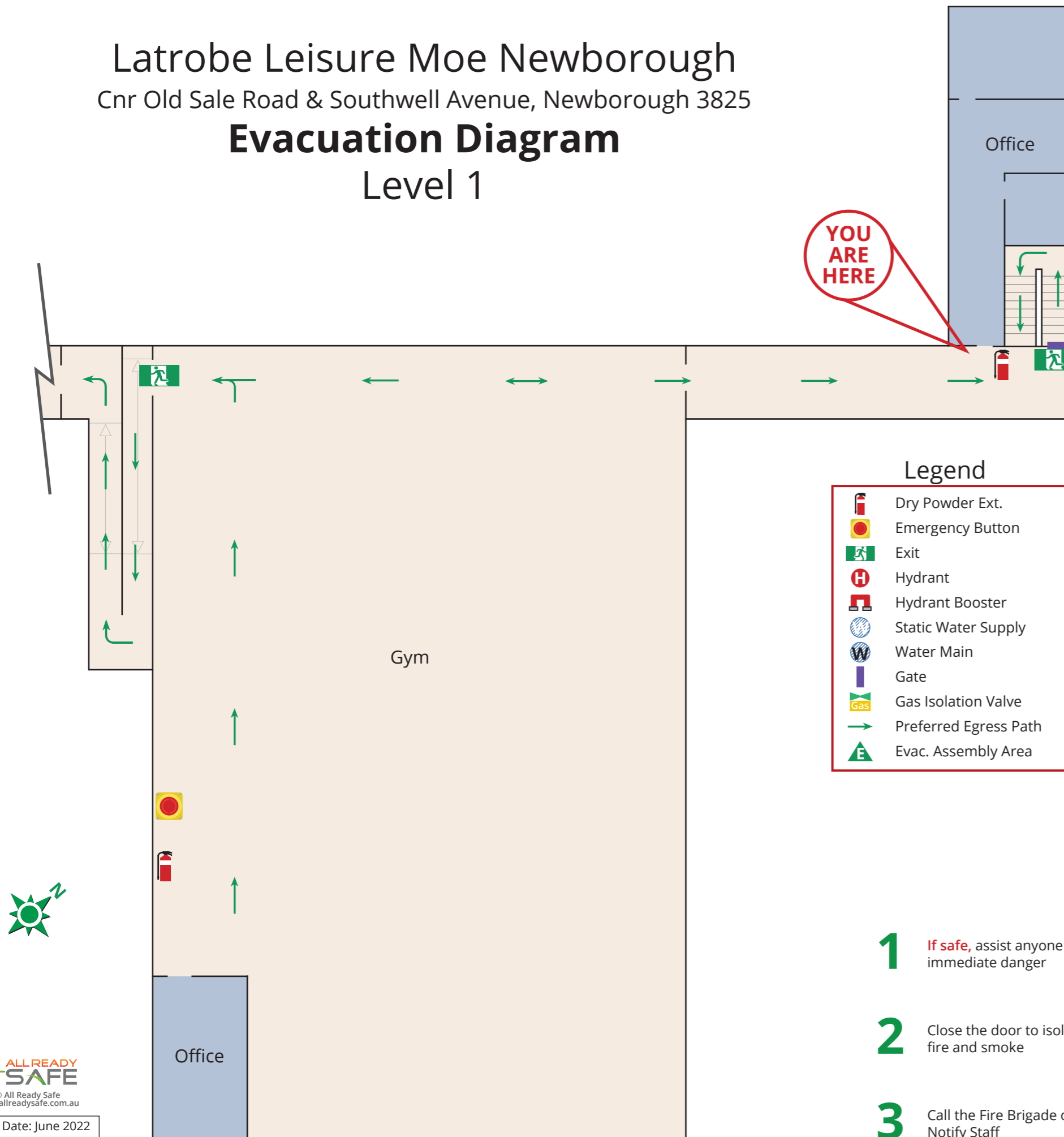
ALLREADY SAFE
 © All Ready Safe
 www.allreadysafe.com.au
 Issue Date: June 2022
 Valid to: June 2027

Latrobe Leisure Moe Newborough

Cnr Old Sale Road & Southwell Avenue, Newborough 3825

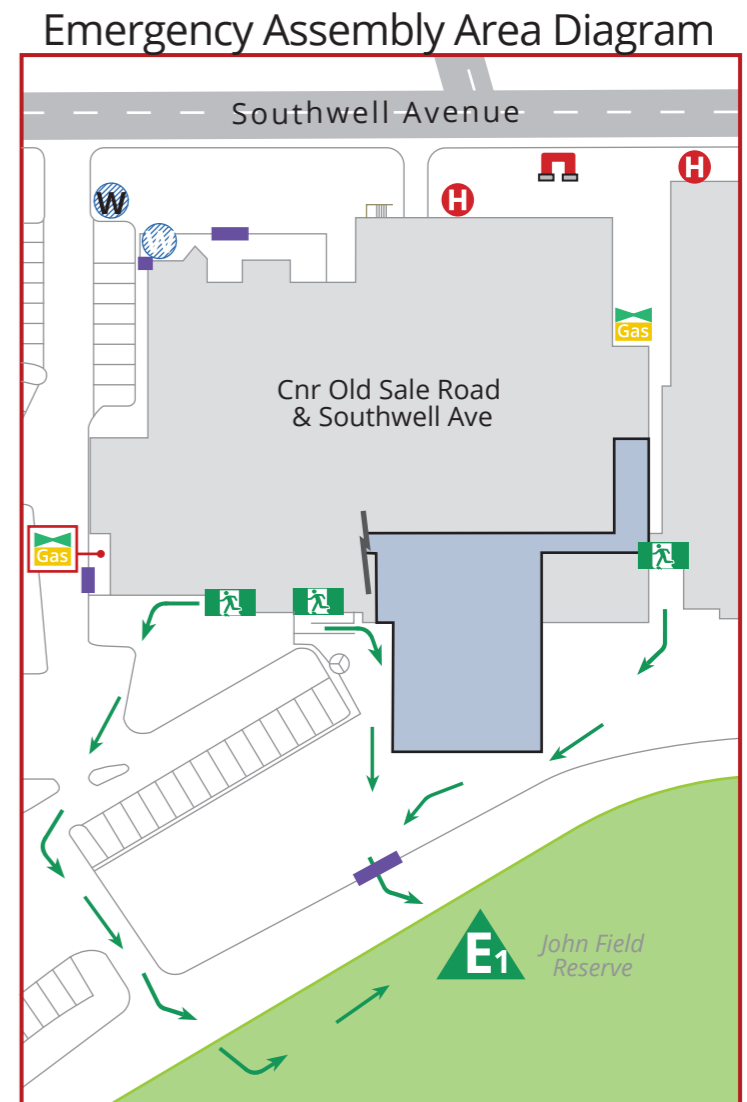
Evacuation Diagram Level 1

**YOU
ARE
HERE**



Legend

- Dry Powder Ext.
- Emergency Button
- Exit
- Hydrant
- Hydrant Booster
- Static Water Supply
- Water Main
- Gate
- Gas Isolation Valve
- Preferred Egress Path
- Evac. Assembly Area



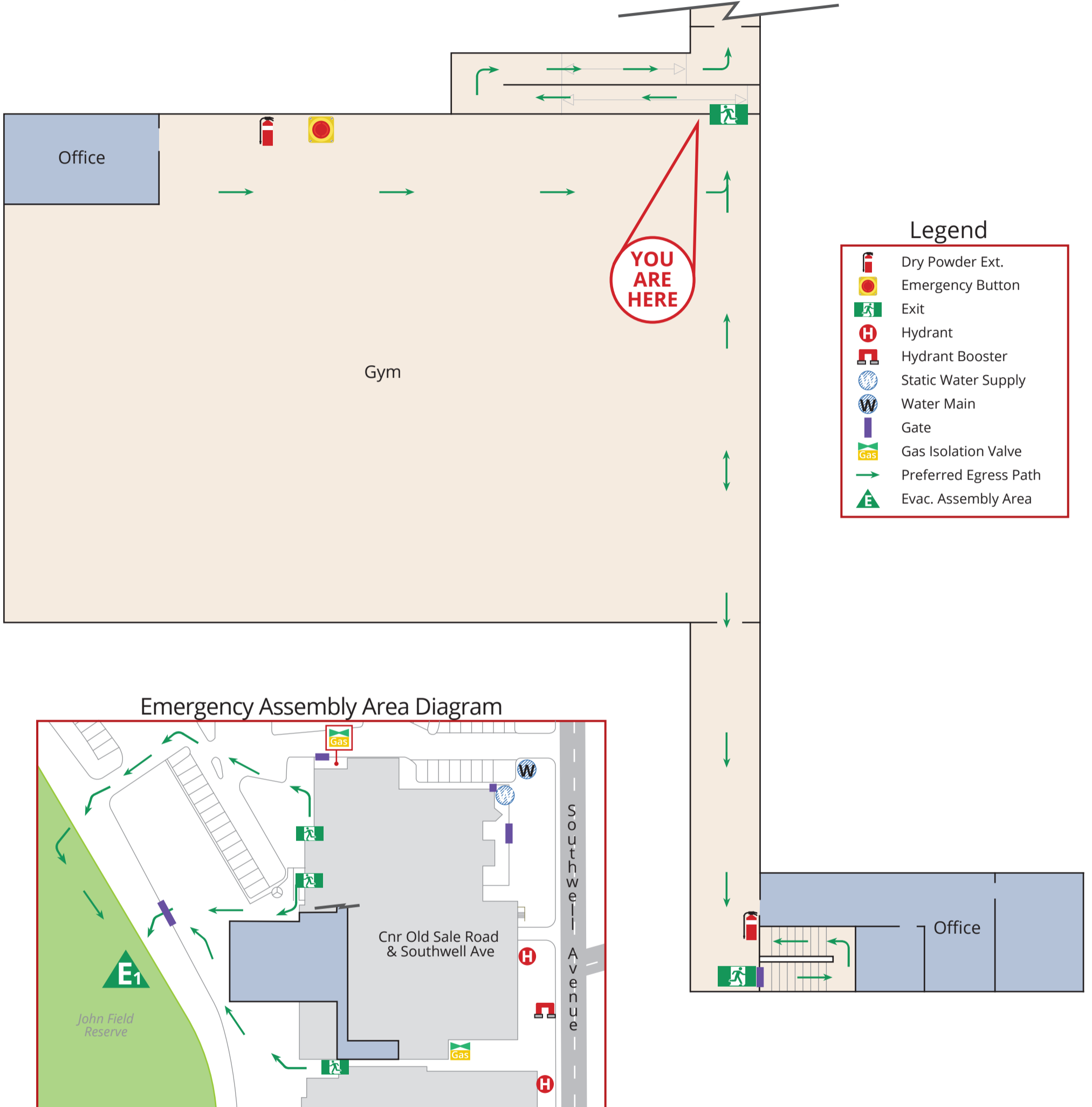
Standard Fire Orders

- | | | | |
|---|--|---|--|
| <p>1 If safe, assist anyone in immediate danger</p> | | <p>4 If safe, extinguish fire
DO NOT PLACE YOURSELF IN DANGER!</p> | |
| <p>2 Close the door to isolate fire and smoke</p> | | <p>5 If required, evacuate to Assembly Area</p> | |
| <p>3 Call the Fire Brigade on 000
Notify Staff</p> | | <p>6 Remain at Assembly Area as directed
Account for all occupants</p> | |







Latrobe Leisure Moe Newborough

Cnr Old Sale Road & Southwell Avenue, Newborough 3825

Evacuation Diagram Level 1



Standard Fire Orders

- | | |
|---|--|
| <p>1 If safe, assist anyone in immediate danger </p> <p>2 Close the door to isolate fire and smoke </p> <p>3 Call the Fire Brigade on 000 Notify Staff </p> | <p>4 If safe, extinguish fire DO NOT PLACE YOURSELF IN DANGER! </p> <p>5 If required, evacuate to Assembly Area </p> <p>6 Remain at Assembly Area as directed Account for all occupants </p> |
|---|--|

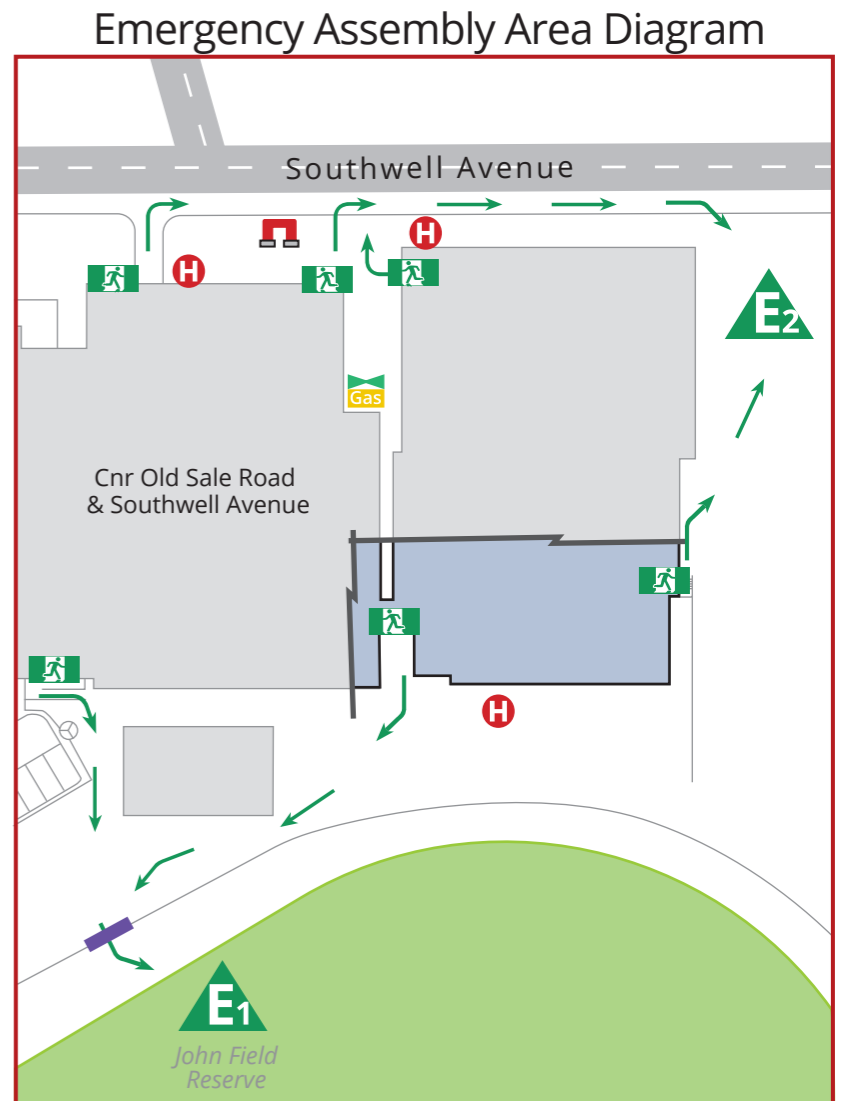
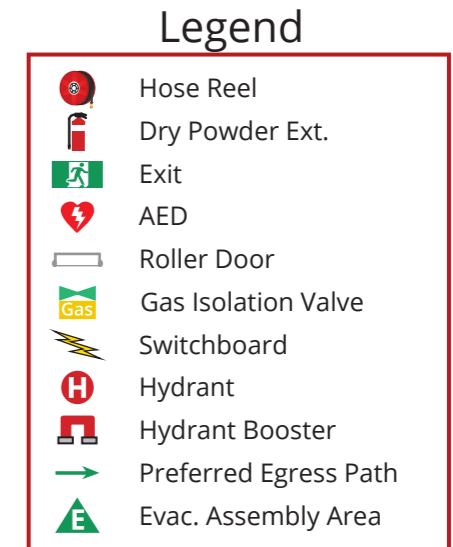
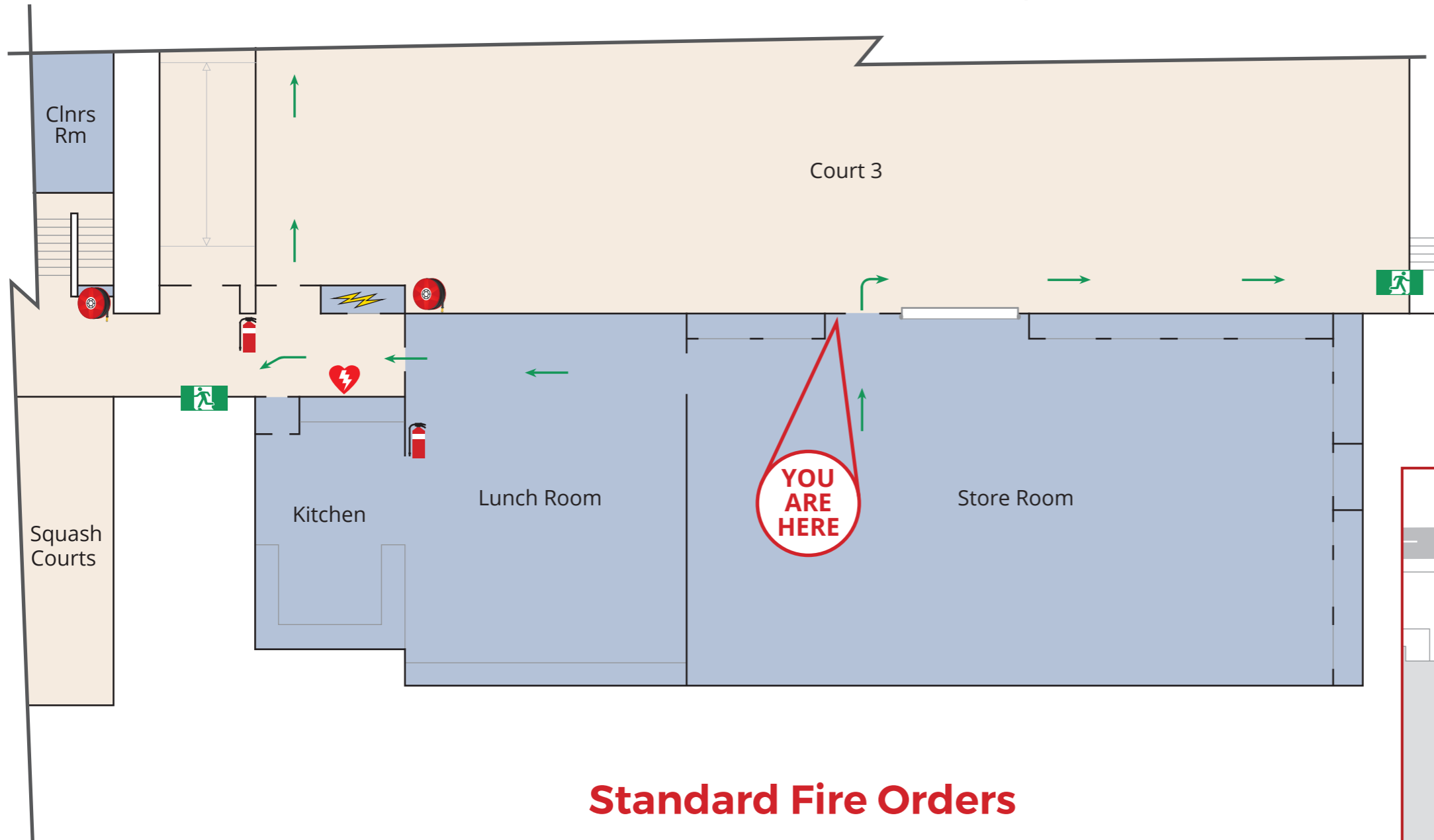


Issue Date: June 2022
Valid to: June 2027

Latrobe Leisure Moe Newborough

Cnr Old Sale Road & Southwell Avenue, Newborough 3825

Evacuation Diagram



Standard Fire Orders

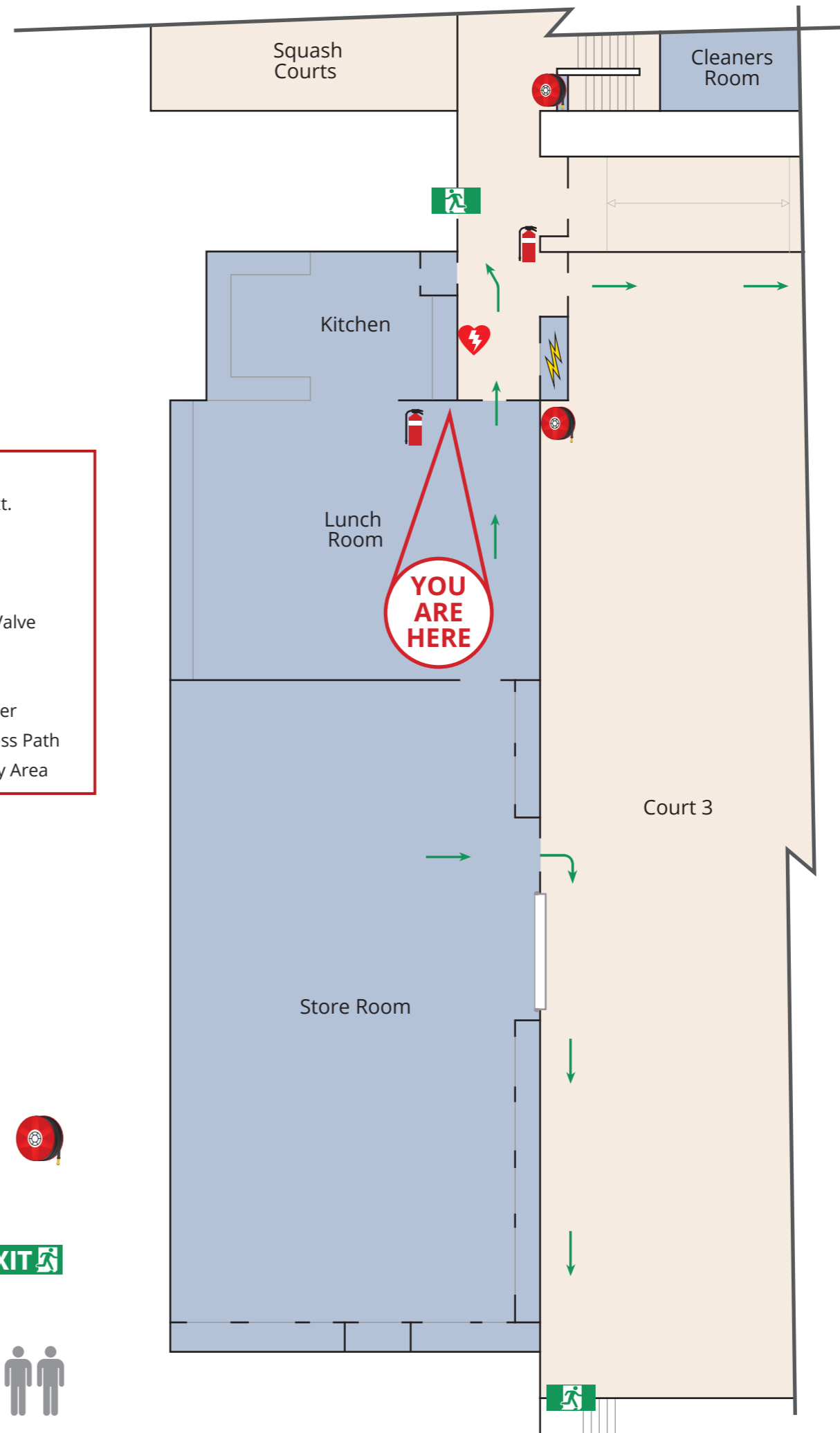
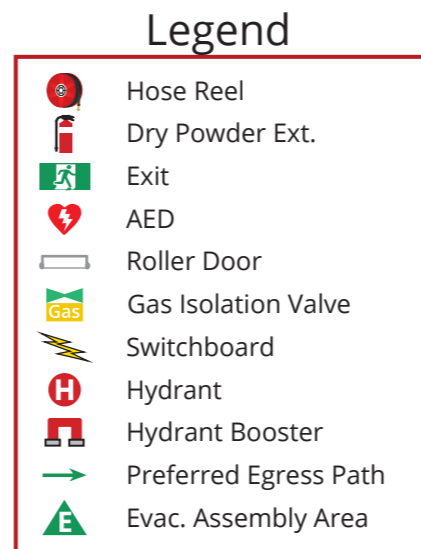
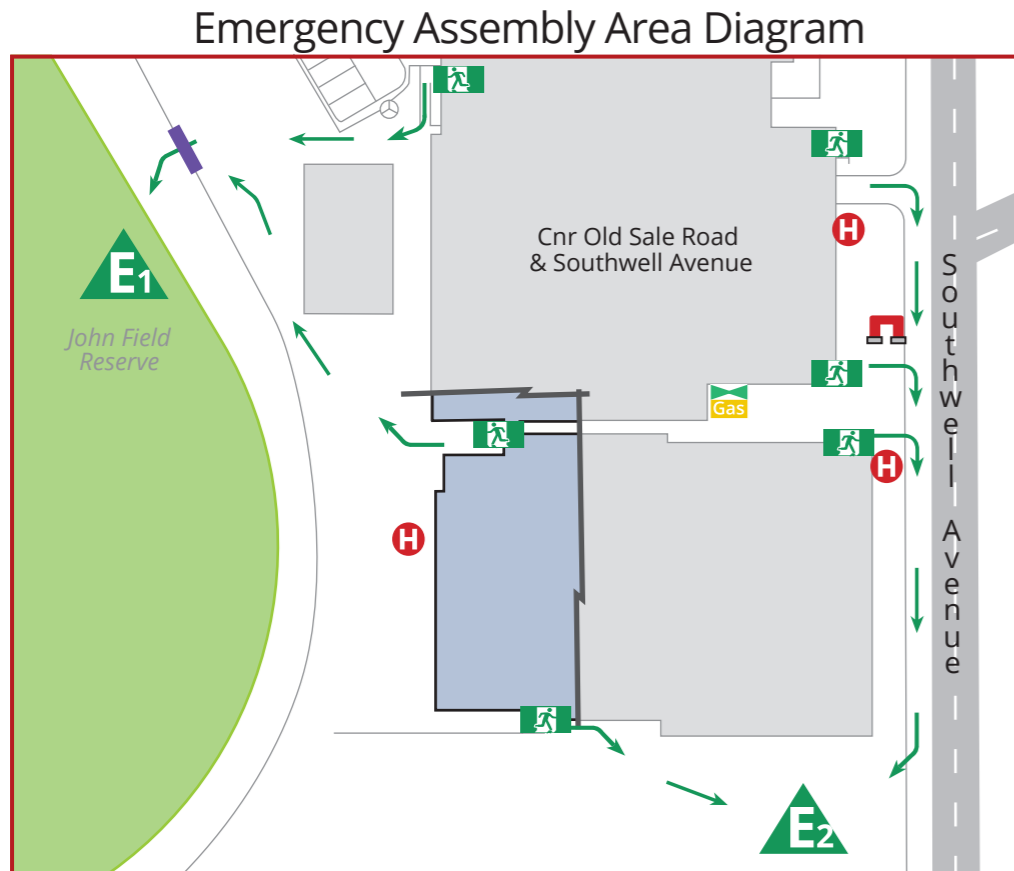
- | | | | |
|---|--|---|--|
| <p>1 If safe, assist anyone in immediate danger</p> | | <p>4 If safe, extinguish fire
DO NOT PLACE YOURSELF IN DANGER!</p> | |
| <p>2 Close the door to isolate fire and smoke</p> | | <p>5 If required, evacuate to Assembly Area</p> | |
| <p>3 Call the Fire Brigade on 000
Notify Staff</p> | | <p>6 Remain at Assembly Area as directed
Account for all occupants</p> | |



Latrobe Leisure Moe Newborough

Cnr Old Sale Road & Southwell Avenue, Newborough 3825

Evacuation Diagram



Standard Fire Orders

- | | |
|---|---|
| <p>1 If safe, assist anyone in immediate danger</p>  | <p>4 If safe, extinguish fire
DO NOT PLACE YOURSELF IN DANGER!</p>  |
| <p>2 Close the door to isolate fire and smoke</p>  | <p>5 If required, evacuate to Assembly Area</p>  |
| <p>3 Call the Fire Brigade on 000
Notify Staff</p>  | <p>6 Remain at Assembly Area as directed
Account for all occupants</p>  |

