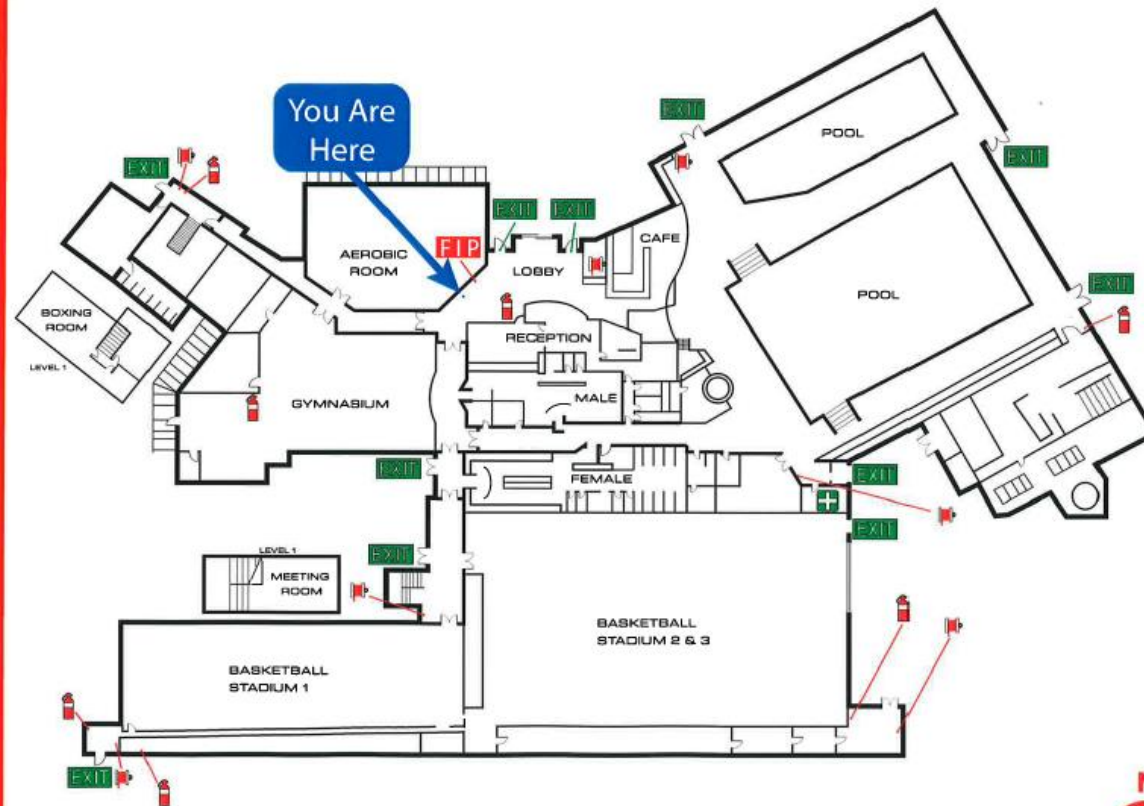


EMERGENCY EVACUATION DIAGRAM

DATE ISSUED: 22/02/2019

VALID AS AT: 21/02/2024



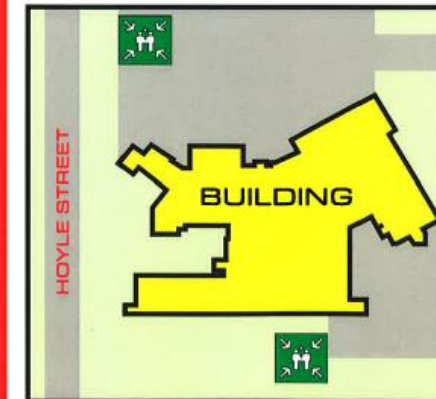
LATROBE LEISURE MORWELL
33-43 MCDONALD STREET, MORWELL

IN CASE OF EMERGENCY
FIRE / POLICE / AMBULANCE
CALL 000

LEGEND

CO ₂ extinguisher	Main switchboard
Water extinguisher	Emergency exit
Dry chemical powder extinguisher	Emergency exit this way
Foam extinguisher	First aid kit
Wet chemical extinguisher	Assembly Area
Vapourising liquid extinguisher	Refuges Point
Fire hose reel	Fire indicator panel
Fire blanket	Emergency Warning and Intercommunication System
Fire hydrant	Emergency phone (WIP)

SITE PLAN



IN CASE OF A FIRE

REMOVE PEOPLE
IF IN DANGER TO THE ASSEMBLY AREA

ALERT OTHERS - RAISE THE ALARM
RESIDENTS AND MEMBERS OF THE PUBLIC

CONFIN E FIRE AND SMOKE
CLOSE ALL WINDOWS AND DOORS (IF SAFE TO DO SO)

EVACUATE TO ASSEMBLY AREA
REMAIN AT ASSEMBLY AREA (IF SAFE TO DO SO)

EVACUATION PROCEDURES

1. REMAIN CALM. DO NOT PANIC
2. LEAVE BUILDING BY DESIGNATED EXIT OR NEAREST SAFE EXIT
3. PROCEED TO THE NEAREST ASSEMBLY AREA (SEE MAP), OR AS DIRECTED BY STAFF/EMERGENCY SERVICES
4. REMAIN AT ASSEMBLY AREA UNTIL OTHERWISE DIRECTED BY STAFF/ EMERGENCY SERVICES.

FIRE EXTINGUISHER OPERATION

- STAY BACK FROM FIRE 2-3 METRES
- CHECK PRESSURE GAUGE
- ENSURE DOOR OR CLEAR EXIT PATH IS DIRECTLY BEHIND YOU
- USE THE PASS METHOD
- P**ULL PIN
- A**IM AT EDGE OF FIRE
- S**QUEEZE THE HANDLE
- W**EEP THE FIRE

FOCUS FIRE & SAFETY MEMBER OF



FOCUS ALLIANCE

PHONE: 9854 7300

